



Hagley Parish Council

Neighbourhood Plan

**Initial Public Consultation
October 2018**



Outline of Presentation

- **Why do we need a Neighbourhood Plan?**
- **What can a Neighbourhood Plan do?**
- **How to prepare a Neighbourhood Plan**
- **How long will it take?**
- **What is it likely to include?**
- **Bromsgrove District Plan Review**
- **Summary**
- **What do YOU think?**
- **In Conclusion**

Why do we need a Neighbourhood Plan?



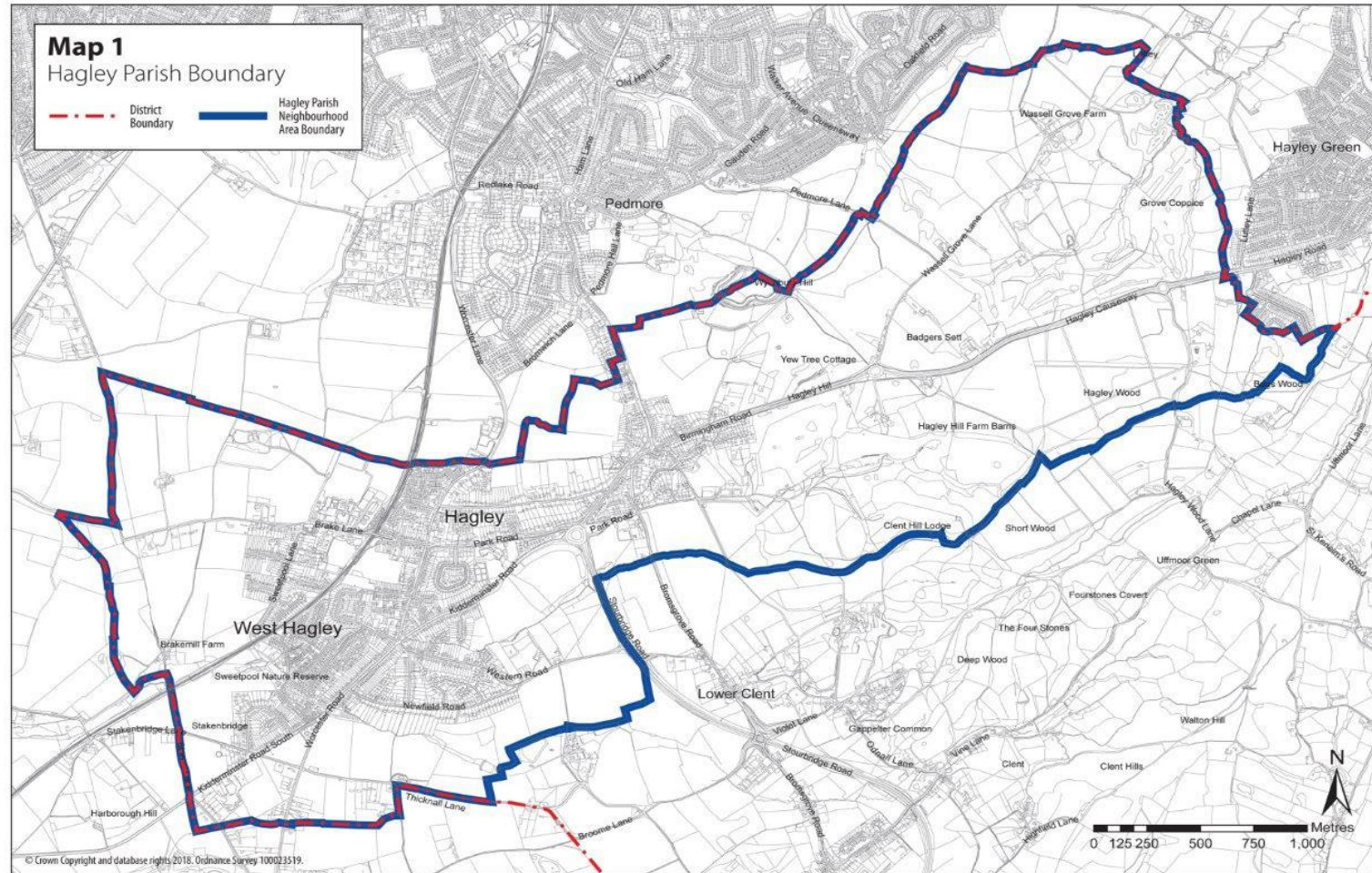
- **National Planning Policy Framework**
- **Local Development Plan**
 - Bromsgrove Development Plan
 - Hagley Neighbourhood Plan
- **Determination of Planning Applications**
 - Development Plan Policies
 - Other Material Considerations
- **Direct future development at Local Level**

What can a Neighbourhood Plan do?



- **Lowest level of the Development Plan for the area**
- **Must be in general conformity with the adopted District Plan**
- **It cannot contradict the District Plan but can add to it, particularly on local issues**
- **Once in force it must be taken into account in determining planning applications**
- **Our Neighbourhood Plan will cover Hagley Parish**

Hagley Parish Area





How to Prepare a Neighbourhood Plan

- **Area Designation (Done)**
- **Community Engagement (Ongoing throughout)
(what you want in the Plan)**
- **Identify Issues, Develop Aims and Policies and Draft Plan**
- **Statutory Consultation on Proposed NHP**
- **Submission to Bromsgrove District Council**
- **Independent Examination and possible Modifications**
- **Local Referendum (majority of voters must be in favour)**
- **Plan brought into force**



How Long will it Take?

<ul style="list-style-type: none">• Initial Public Consultation	Autumn 2018
<ul style="list-style-type: none">• Workshops on Specialist Topics• Identify Aims & Issues	Spring/Summer 2019
<ul style="list-style-type: none">• Prepare Draft Plan	Autumn 2019
<ul style="list-style-type: none">• Bromsgrove Consultation	Spring 2020
<ul style="list-style-type: none">• Public Consultation & Review• Statutory Consultation & Review• Formal Submission to Bromsgrove• Independent Examination• Modifications• Local Referendum (50% to approve)	Spring 2020 to Spring 2023
PLAN BROUGHT INTO FORCE	2023 ?

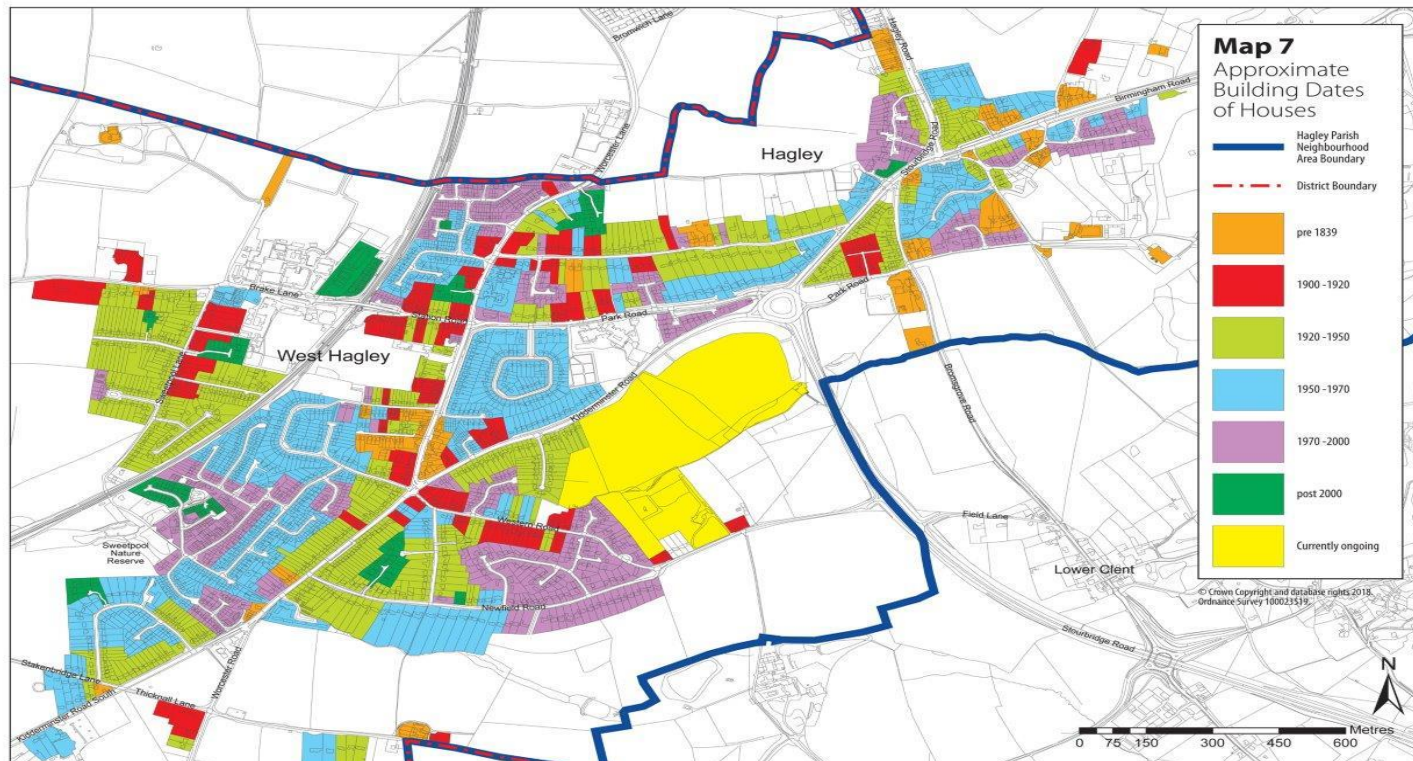
What is it Likely to Include?



- **History and Character**
- **Protection of the Environment**
- **Movement of People and Vehicles**
- **Future Business Development**
- **Future Housing Development**
- **Social Infrastructure**
- **Other Issues?**

History and Character of Hagley

- **History and Character are important in Planning a Community**
 - National Policy and Bromsgrove District Plan
 - Hagley from its earliest history to the present day

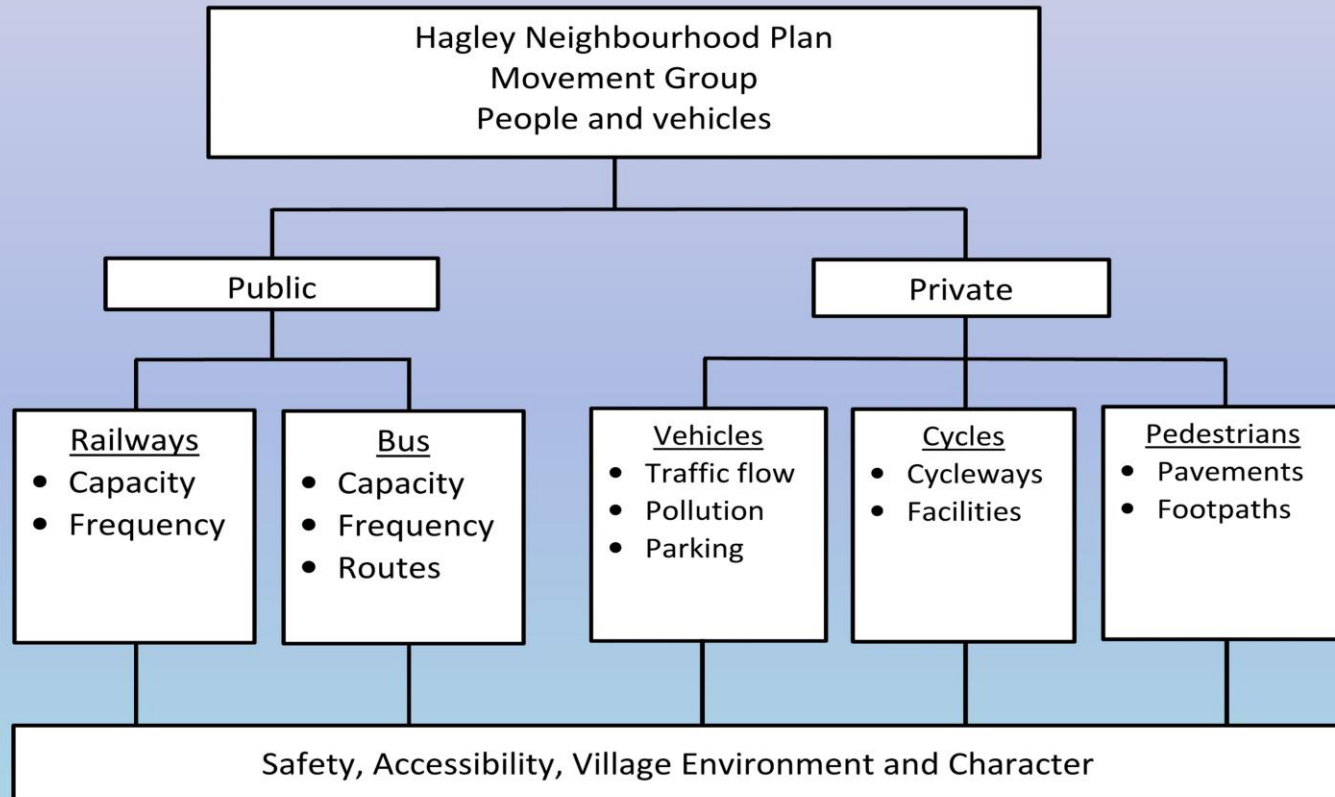


Map 5 Protected Buildings

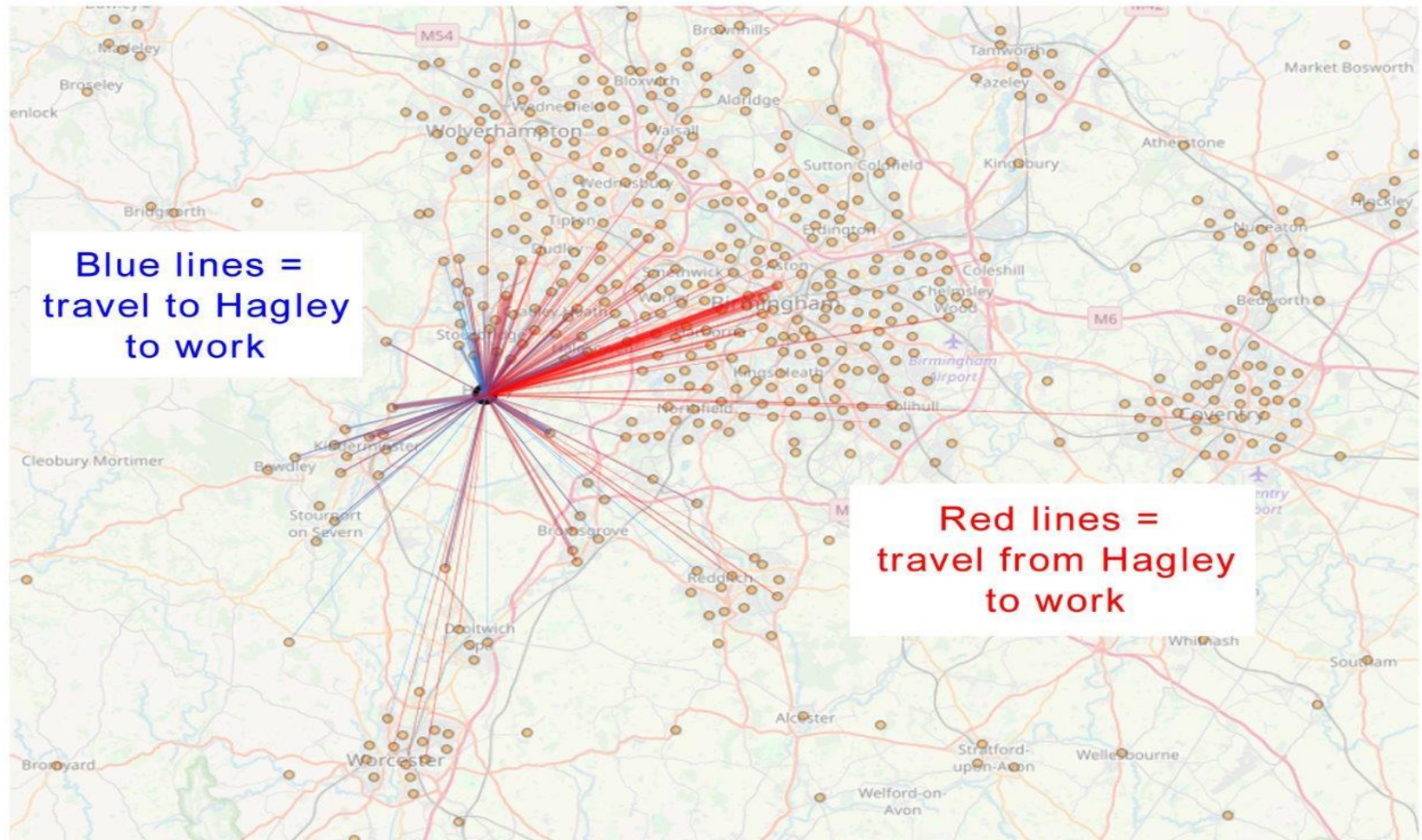
- Listed Building
- District Boundary
- Green Belt
- Historic Parks and Gardens
- SSSI
- Conservation Area
- Hagley Parish Neighbourhood Area Boundary
- Residential Area
- Ancient Woodlands
- Former Landscape Protection Area
- Open Space

© Crown Copyright and database rights 2018. Ordnance Survey 100023519.

Movement of People and Vehicles



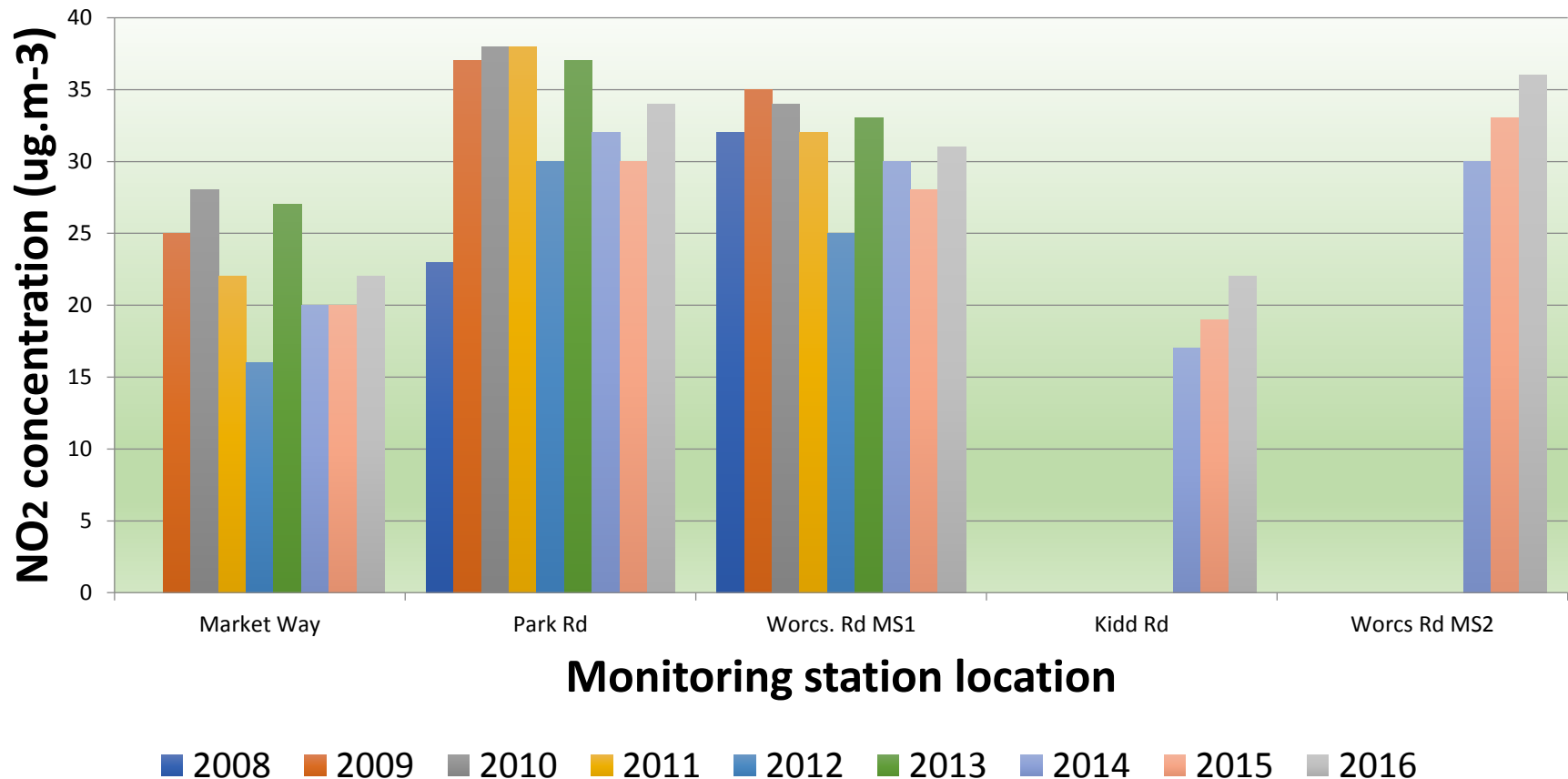
Hagley Commuting





Hagley Air Quality

Air pollution(NO₂) within the Hagley Air Quality Management Area



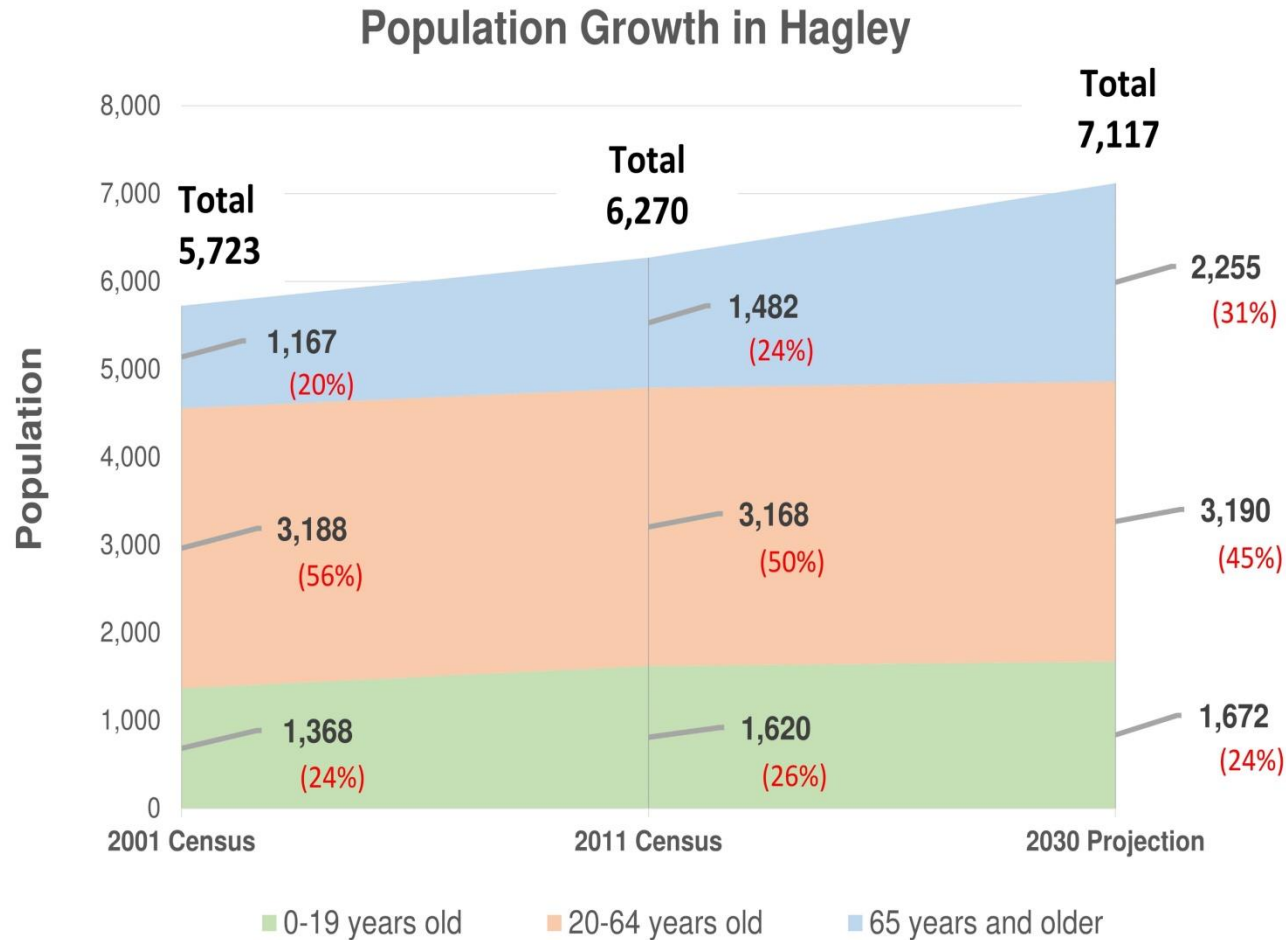


Hagley Businesses

- **Initial Retail Survey**
 - Better retail selection than other Communities
 - Few Vacant Premises
 - But Lack of Banks
 - Thriving Shopping Area
 - Many Businesses run by Non-residents
 - Car Parking is an issue
- **Non-retail Businesses**
 - No survey yet but appear to be thriving
- **Future Consultation with Businesses**



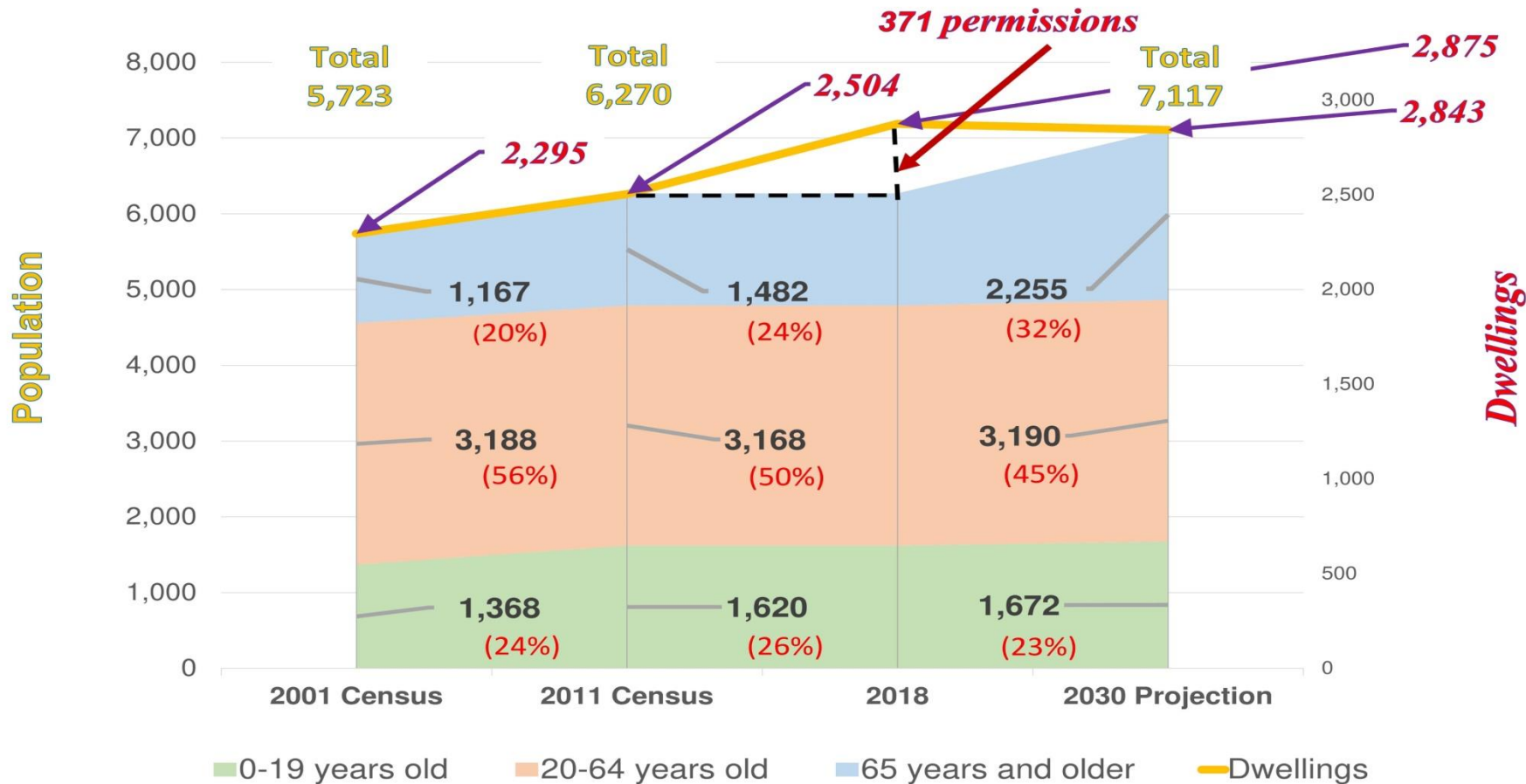
Hagley Population





Hagley Population & Dwellings

Population and Dwellings Growth in Hagley

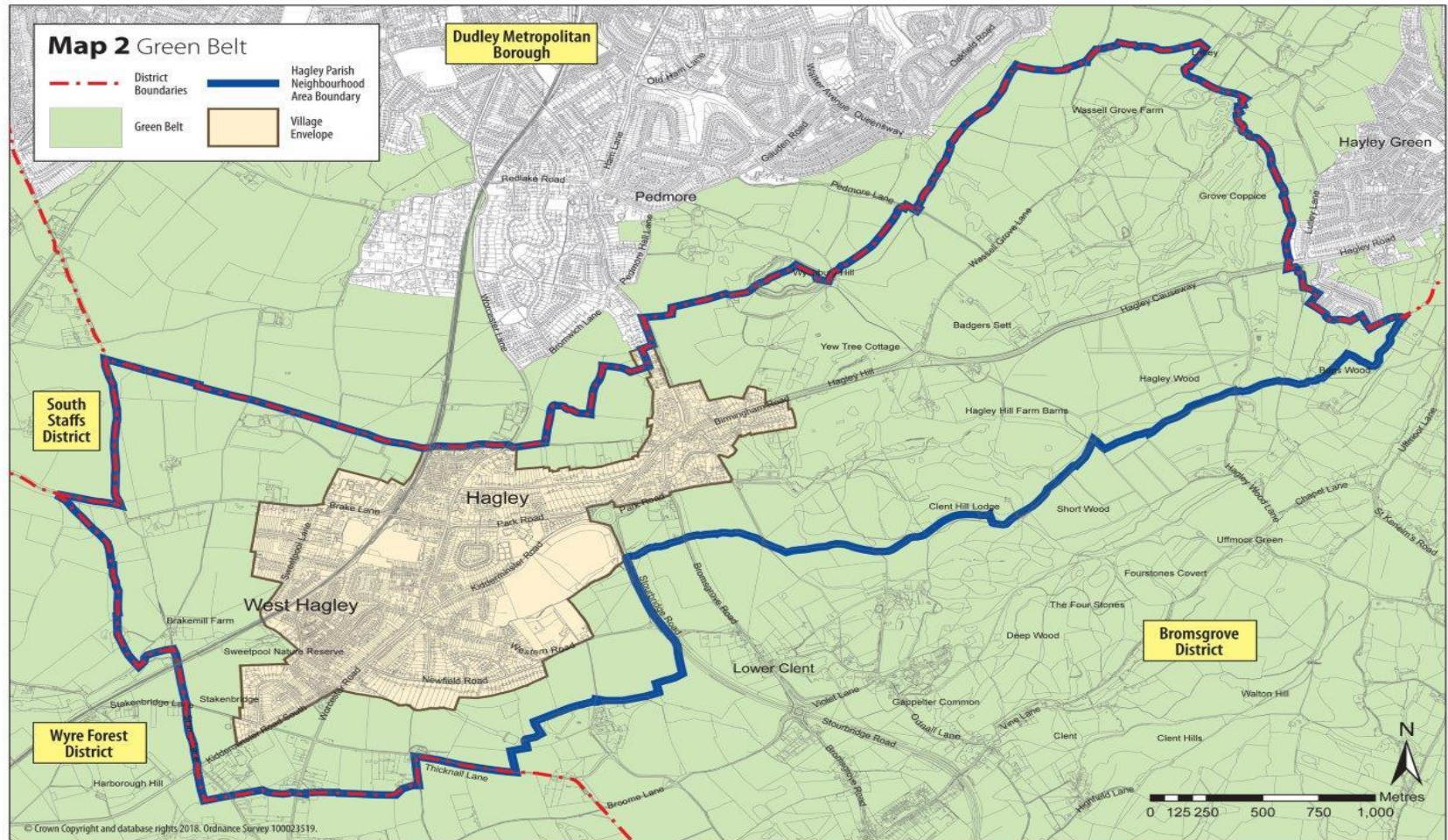




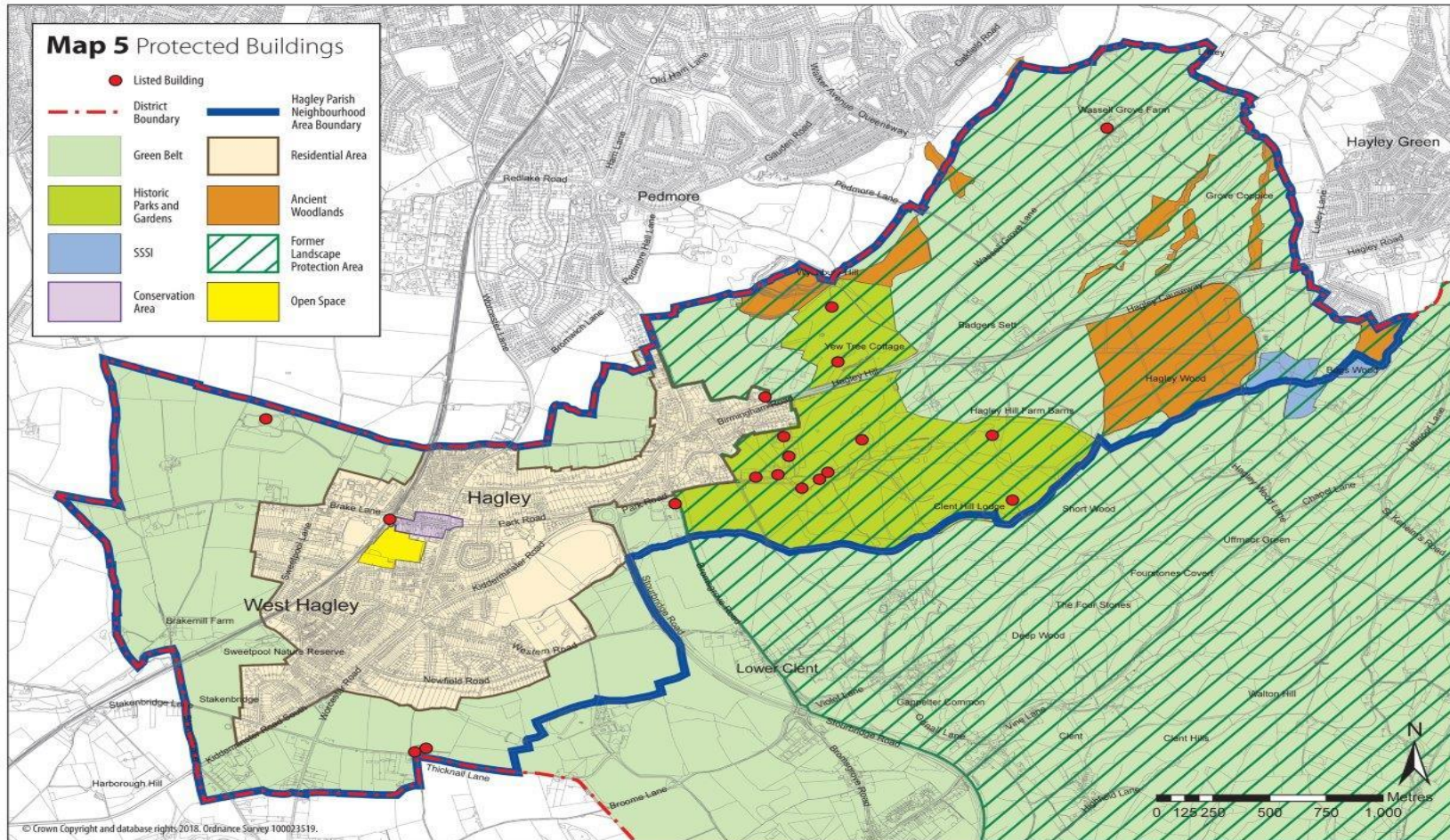
Green Belt Policy

- The fundamental aim of Green Belt policy is to prevent urban sprawl by keeping land permanently open.
- The essential characteristics of Green Belts are their openness and their permanence.
- Green Belts serve five purposes:
 - To check the unrestricted sprawl of large built-up areas,
 - To prevent neighbouring towns merging into one another,
 - To assist in safeguarding the countryside from encroachment,
 - To preserve the setting and special character of historic towns, and
 - To assist in urban regeneration, by encouraging the recycling of derelict and other urban land.

(NPPF paras 133 &134)



Other Planning Constraints





Social Infrastructure

- **Schools**
- **Doctors' Surgery**
- **Playing Fields**
- **Community Buildings**

Bromsgrove District Plan Review



- **West Midlands Green Belt Review**
- **Bromsgrove District Plan**
 - **Housing Land Requirements**
 - **Consultation on Issues and Options**
(until 19 November 2018)

Summary



- **The Plan will take years to prepare but we need it to help control development in Hagley**
- **There will be ongoing community engagement throughout**
- **The policies are likely to cover many issues and you are invited to raise others that have not already been identified**
- **You can make contact through the website or in writing to the Parish Office**
- **This PowerPoint will be on the website as a reminder**



What do YOU Think?

- **The Process?**
- **Likely Topics**
 - **History and Character**
 - **The Environment**
 - **Movement of People and Vehicles**
 - **Business**
 - **Housing**
 - **Social Infrastructure**
 - **Other Issues?**
- **Bromsgrove District Plan Review**

In Conclusion



- **Have your say**
 - **Comment Sheets**
 - **Contact the Neighbourhood Plan Group**
 - www.hagleyneighbourhoodplan.org
 - or Hagley Parish Council, 74a Worcester Road, Hagley, DY9 0NJ
- **Thank you for coming**